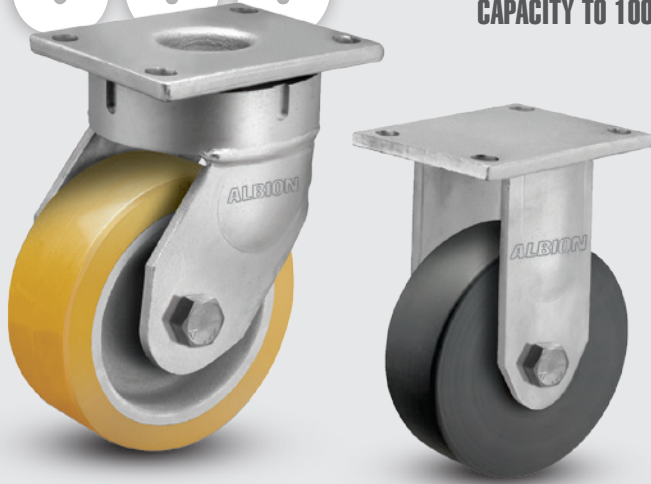


# 600

## Shockmaster™ Kingpinless Casters

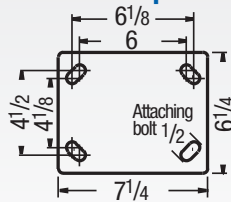
CAPACITY TO 10000



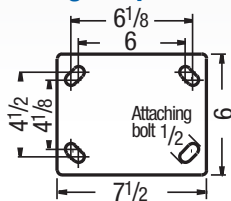
An added step up from the 610 (previous page), constructed of a one-piece forging for ultimate durability and strength. Highly recommended for automotive and aerospace applications. This caster is built to take the punishment of constant swiveling or for service where shock or impact loads would damage less rugged casters.

### MOUNTING OPTIONS

#### Swivel Top Plate



#### Rigid Top Plate



### TYPICAL APPLICATIONS

- Body dolly carts
- Engine dollies
- Material carts
- Chassis rack carts
- Paint line dollies
- Towed trash gondolas

### SWIVEL CROSS SECTION



+ For swivel models add "S", for rigid model add "R" to end of base caster number.

### Moldon Rubber on Cast Iron (09 Tapered Roller Bearing)\*

MR	Wheel Diameter (Inches)	Tread Width (Inches)	Capacity (Lbs) (Based on nominal operation)	Overall Height (Inches)	Swivel Lead (Inches)	Base Caster Number+
	6	2 1/2	700	8 1/2	2 1/2	600MR06409
	6	3	750	8 1/2	2 1/2	600MR06509
	8	2 1/2	850	10 1/2	2 1/2	600MR08409
	8	2 1/2**	850	10 1/2	2 1/2	600MH08409
	8	3	900	10 1/2	2 1/2	600MR08509
	10	3	1000	12 1/2	2 1/2	600MR10509
	10	3**	1000	12 1/2	2 1/2	600MH10509
	10	4	1400	12 1/2	2 1/2	600MR10709
	12	3 1/2	1500	15 1/2	2 1/2	600MR12609
	12	4	1600	15 1/2	2 1/2	600MR12709

\*Roller (01) bearings available. Change "09" to "01". Example: 600MR10501.

\*\*Heavy-duty MH version of wheel.



Premium Quality



Towing^



Environmentally Friendly

### FEATURES

- **Top Plate:** 1/2" thick AISI 1045 steel one-piece forging precision machined and for long life
- **Swivel Section:** 3/4" ball bearings mounted in a 4-1/2" precision machined raceway. ZerK in swivel section
- **Legs:** 3/8" thick steel welded to yoke base using 100,000 psi weld filler
- **Axle:** 1" diameter
- Alternate or custom caster configurations available

### RIG OPTIONS

- Spring-loaded, dual wheel models available, consult factory
- Notched yoke base for swivel locks specify **NY600**

### BRAKE OPTIONS

To order, add brake code below to end of model. Example: 600PY08409SP

**Poly Cam** specify **P**



**PLB Integrated** specify **PLB**



**Single Side** specify **SSB610**. **Double Sided** specify **DSB610**



**Face Contact** specify **F**

**Hand Operated Detachable Swivel Lock** specify **L**.



### BEARING OPTIONS



Straight Roller (01)



Tapered Roller (09)



Precision Ball (28)



Radial Ball (27)

+ For swivel models add "S", for rigid model add "R" to end of base caster number.

Wheel Diameter (Inches)	Tread Width (Inches)	Capacity (Lbs) (Based on nominal operation)	Overall Height (Inches)	Swivel Lead (Inches)	Base Caster Number+
-------------------------	----------------------	---	-------------------------	----------------------	---------------------

### Polyurethane on Aluminum (01 Roller Bearing)\*

PD	Wheel Diameter (Inches)	Tread Width (Inches)	Capacity (Lbs)	Overall Height (Inches)	Swivel Lead (Inches)	Base Caster Number+
	8	2 1/2	2010	10 1/2	2 1/2	600PD08401
	8	3	2520	10 1/2	2 1/2	600PD08501
	10	2 1/2	2370	12 1/2	2 1/2	600PD10401
	10	3	3000	12 1/2	2 1/2	600PD10501

\*Tapered Roller (09) bearings available. Change "01" to "09". Example: 600PD08409.

### Polyurethane on Cast Iron (09 Tapered Roller Bearing)\*

PY	Wheel Diameter (Inches)	Tread Width (Inches)	Capacity (Lbs)	Overall Height (Inches)	Swivel Lead (Inches)	Base Caster Number+
	6	2 1/2	1600	8 1/2	2 1/2	600PY06409
	6	3	2000	8 1/2	2 1/2	600PY06509
	8	2 1/2	2000	10 1/2	2 1/2	600PY08409
	8	3	2500	10 1/2	2 1/2	600PY08509
	8	4	3800	10 1/2	2 1/2	600PY08709
	10	3	3000	12 1/2	2 1/2	600PY10509
	10	4	4200	12 1/2	2 1/2	600PY10709
	12	3 1/2	4110	15 1/2	2 1/2	600PY12609
	12	4	4800	15 1/2	2 1/2	600PY12709

\*Roller (01) bearings available. Change "09" to "01". Example: 600PY06401.

Continue on next page >>