

Faultless Precision, Heavy Duty Air Cargo/Conveyor Caster

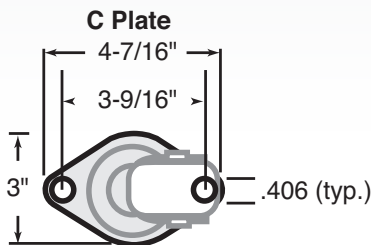
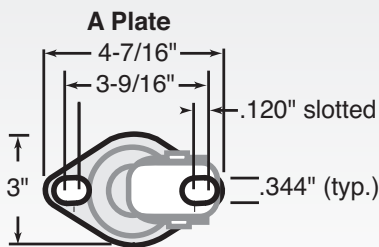


CAPACITY TO 375



Designed for inverted applications, these Faultless conveyor casters are designed for easy installation and replacement in the field. Special dust-and-grease cap and special all-temperature lubricant are standard along with precision bearing swivel and needle bearing wheels. Corrosive-resistant zinc dichromate finish is standard.

MOUNTING OPTIONS



TYPICAL APPLICATIONS

- Cargo Conveyor Equipment

FEATURES

- **Raceways:** Fully sealed raceways for low maintenance and protection of the swivel head in outdoor environments
- **Swivel Bearings:** Precision bearing swivel
- **Wheel Bearings:** Need bearings or ball bearings; thread guards standard for longer life
- **Finish:** Corrosion-resistant zinc dichromate or powder coated finishes
- **Suggested Temperature Range:** 20°F to +180°F
- **Special Top Plates Available:** For specific installation requirements, consult factory

	Wheel Diameter (Inches)	Tread Width (Inches)	Capacity (Lbs) (rated for manual operation)	Overall Height (Inches)	Swivel Radius (Inches)	Caster Number
Polyflex Brown (Needle Bearing) with A Plate	2-3/4	13/8	375	4 1/32	23/8	27015



Polyflex Brown (Needle Bearing) with C Plate	3	15/6	270	325/32	25/8	25675
	3	15/6	300	41/32	215/32	25696



Polyflex Grey with Toe Guard (Needle Bearing) with A Plate	2-3/4	13/8	375	4 1/32	23/16	27016
---	-------	------	-----	--------	-------	--------------



Polyflex Brown with Toe Guard (Needle Bearing) with A Plate	2-3/4	13/8	375	4 1/32	2 13/16	26381
--	-------	------	-----	--------	---------	--------------

