

VF/VH

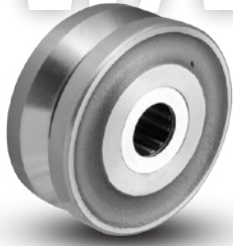


Premium Quality



Heat Resistant

Drop Forged Steel V-Groove



Wheel face and "V"-groove are machined from drop forged steel. A relief groove at the base of the "V" tends to equalize the load to each face of the angle track when in operation. Wheel face and bore are machined for concentricity to proper tracking. These wheels can be used not only on a track but flat surfaces as well. VH wheels feature a larger bore for greater capacity.

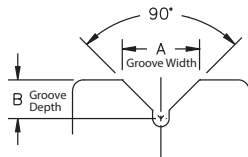
Please note: Track alignment is critical when utilizing v-groove wheels.

FEATURES

- **Wheel face:** V-Groove
- **Finish:** Clear Coat Enamel w/Rust Inhibitor
- **Temperature Range:** Up to +350°F, consult factory for high temperature requirements
- **Hardness:** Brinell 149 (converted from Rockwell 80 B)
- **Tensile:** 64,000 psi

WHEEL OPTIONS

- Note: Select bearings featured are recommended for standard applications. For special applications or alternate bearings consult factory. See bearing information on page 13
- For customization & special application options, please consult factory



Letters match to chart descriptions

Wheel Diameter (Inches)	Tread Width (Inches)	Capacity (Lbs) (rated for manual operation)	Hub Length (Inches)	Bore ID (Inches)	Bearing ID (Inches)	Groove Width "A" (Inches)	Groove Depth "B" (Inches)	Approx. Wt. (Lbs)	Wheel Number Roller Bearing (01)	Wheel Number Tapered Roller (09)
Drop Forged Steel V-Groove (VF, VH)										
6	3	6000	3-1/4	2-7/16	1-1/4	1-3/8	11/16	20-1/4	VF0650120	
6	3	6000	3-1/4	2-7/16	1-1/2	1-3/8	11/16	20-1/4	VF0650124	
6	3	10000	3-1/2	2-7/16	1	1-3/8	11/16	19-3/4		VF0650916
6	3	10000	3-1/2	2-7/16	1-1/4	1-3/8	11/16	19-3/4		VF0650920
6	3	15000	3-1/2	3-1/8	1-1/4	1-3/8	11/16	22		VH0650920
6	3	15000	3-1/2	3-1/8	1-1/2	1-3/8	11/16	22		VH0650924
8	3	6000	3-1/4	1-15/16	1	7/8	7/16	30	VF0850116	
8	4	8350	4-1/4	2-7/16	1-1/4	1-3/4	7/8	21-3/4	VF0870120	
8	4	8350	4-1/4	2-7/16	1-1/2	1-3/4	7/8	21-3/4	VF0870124	
8	4	10000	4-1/2	2-7/16	1	1-3/4	7/8	21		VF0870916
8	4	10000	4-1/2	2-7/16	1-1/4	1-3/4	7/8	21		VF0870920
8	4	15000	4-1/2	3-1/8	1-1/4	1-3/4	7/8	27-1/2		VH0870920
8	4	15000	4-1/2	3-1/8	1-1/2	1-3/4	7/8	27-1/2		VH0870924
10	3	6000	3-1/4	2-7/16	1-1/4	1-3/8	11/16	37-1/2	VH1050120	
10	3	6000	3-1/4	2-7/16	1-1/2	1-3/8	11/16	37-1/2	VH1050124	
10	3	6000	3-1/2	2-7/16	1	1-3/8	11/16	37		VH1050916
10	3	6000	3-1/2	2-7/16	1-1/4	1-3/8	11/16	37		VH1050920
10	3	5000	3-1/4	1-15/16	1	1-3/8	11/16	27-3/4	VF1050116	
10	3	5000	3-1/4	1-15/16	1-1/4	1-3/8	11/16	27-3/4	VF1050120	
10	4	8350	4-1/4	2-7/16	1-1/4	1-3/4	7/8	48	VF1070120	
10	4	8350	4-1/4	2-7/16	1-1/2	1-3/4	7/8	48	VF1070124	
10	4	10000	4-1/2	2-7/16	1	1-3/4	7/8	47-1/4		VF1070916
10	4	10000	4-1/2	2-7/16	1-1/4	1-3/4	7/8	47-1/4		VF1070920
10	4	15000	4-1/2	3-1/8	1-1/4	1-3/4	7/8	46-1/4		VH1070920
10	4	15000	4-1/2	3-1/8	1-1/2	1-3/4	7/8	46-1/4		VH1070924

FORGED STEEL WHEELS • UP TO 15000