

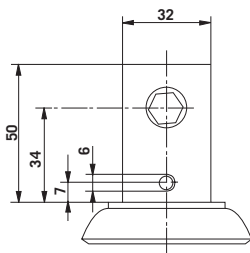


NIMBUS 399

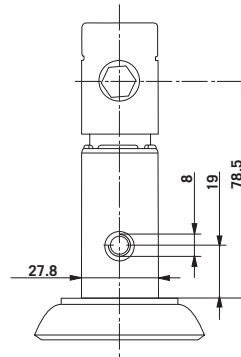
▼ SPECIFICATIONS

Wheel Diameter	Tread Width	Wheel Material	Wheel Bearing	Load Cap (lb)	Stem (78.5mm)	EDP	Stem (34mm)	EDP
6" (150mm)	1 1/4" (32mm)	Polyurethane	Precision	330	399Q38K150VK2351	02027	399Q38K150VK985	02144
6" (150mm)	1 1/4" (32mm)	Polyurethane	Precision	330	399R38K150VK2351	02028	399R38K150VK985	02145

The measurements in millimeters are exact.



- Stem diameter 32mm
- Two locking hole options available
- Locking hole in line or across direction of travel
- Four fixing holes



- Stem diameter 27.8mm
- Two locking hole options available
- Locking hole in line or across direction of travel
- Four fixing holes
- Snap-on adapter sleeves available for different tube dimensions

▼ MOUNTING OPTIONS

