

MARQUEE (MP)

TOP PLATE MODELS

FREE SWIVEL • TOTAL LOCK • DIRECTION LOCK

IMPROVED



- APPLICATIONS**
- Food Service Equipment
 - Case Carts
 - Utility Carts
 - Medical Equipment
 - Institutional Equipment
 - Hospital Carts
 - Animal Cage Carts
 - Pharmaceutical Equipment

- FEATURES**
- Glass filled nylon body
 - New precision ball bearing raceway
 - **Total lock and direction lock** brake models available
 - Resistant to water and most chemicals
 - Precision bearing in wheel
 - Zinc plated top plate
 - Riveted axle
 - Standard color is light gray with white strip and white wheel core

Our MP Series features attractive two-tone accents.



Custom colors available. Consult factory for quantities.

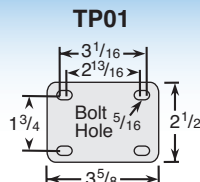
SWIVEL TOP PLATE MODELS

Wheel Diameter (Inches)	Tread Width (Inches)	Wheel Description	Capacity (Lbs)	Load Height Inches (mm)	Swivel Radius Inches (mm)	Wheel Bearing	Model Number
5	1-1/4	TPR Flat	250	6-3/4" (171)	4" (100)	Precision Ball	MP-05TPP-125-SW-TP01
5	1-1/4	TPR Round	275	6-3/4" (171)	4" (100)	Precision Ball	MP-05RTP-125-SW-TP01



TOP PLATE FITTING

Swivel Top Plate Pattern



MARQUEE (MP)

TOP PLATE MODELS

FREE SWIVEL • TOTAL LOCK • DIRECTION LOCK

SWIVEL TOP PLATE TOTAL LOCK MODELS

(LOCKS WHEEL AND SWIVEL)

Wheel Diameter (Inches)	Tread Width (Inches)	Wheel Description	Capacity (Lbs)	Load Height Inches (mm)	Swivel Radius Inches (mm)	Wheel Bearing	Model Number
5	1-1/4	TPR Flat	250	6-3/4" (171)	4" (100)	Precision Ball	MP-05TPP-125-TL-TP01
5	1-1/4	TPR Round	275	6-3/4" (171)	4" (100)	Precision Ball	MP-05RTP-125-TL-TP01



SWIVEL TOP PLATE DIRECTION LOCK MODELS

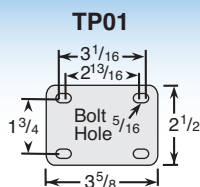
(LOCKS SWIVEL ONLY)

Wheel Diameter (Inches)	Tread Width (Inches)	Wheel Description	Capacity (Lbs)	Load Height Inches (mm)	Swivel Radius Inches (mm)	Wheel Bearing	Model Number
5	1-1/4	TPR Flat	250	6-3/4" (171)	4" (100)	Precision Ball	MP-05TPP-125-DL-TP01
5	1-1/4	TPR Round	275	6-3/4" (171)	4" (100)	Precision Ball	MP-05RTP-125-DL-TP01



TOP PLATE FITTING

Swivel Top Plate Pattern

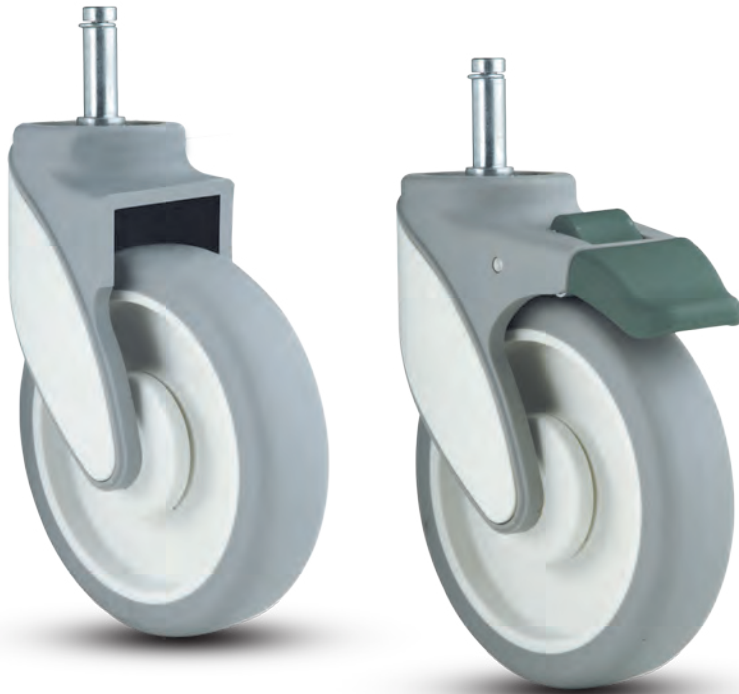


MARQUEE (MP)

GRIP RING STEM MODELS

FREE SWIVEL • TOTAL LOCK • DIRECTION LOCK

IMPROVED



- APPLICATIONS**
- Food Service Equipment
 - Case Carts
 - Utility Carts
 - Medical Equipment
 - Institutional Equipment
 - Hospital Carts
 - Animal Cage Carts
 - Pharmaceutical Equipment

- FEATURES**
- Glass filled nylon body
 - New precision ball bearing raceway
 - **Total lock and direction lock brake models available**
 - Resistant to water and most chemicals
 - Precision bearing in wheel
 - Riveted axle
 - Standard color is light gray with white strip and white wheel core

Our MP Series features attractive two-tone accents.



Custom colors available. Consult factory for quantities.

GRIP RING STEM MODELS

Precision sealed ball bearing raceway design for smooth, quiet maintenance free ride.

Wheel Diameter (Inches)	Tread Width (Inches)	Wheel Description	Capacity (Lbs)	Load Height Inches (mm)	Swivel Radius Inches (mm)	Wheel Bearing	Model Number
5	1-1/4	TPR Flat	250	6-5/8" (168)	4" (100)	Precision Ball	MP-05TPP-125-SW-_____
5	1-1/4	TPR Round	275	6-5/8" (168)	4" (100)	Precision Ball	MP-05RTP-125-SW-_____



Specify Grip Ring Stem (GR) code, see fittings below for dimensions:

GRIP RING STEM FITTINGS

See fittings page for more options.



MARQUEE (MP)

TOP PLATE MODELS

FREE SWIVEL • TOTAL LOCK • DIRECTION LOCK

GRIP RING STEM TOTAL LOCK MODELS

(LOCKS WHEEL AND SWIVEL)

Wheel Diameter (Inches)	Tread Width (Inches)	Wheel Description	Capacity (Lbs)	Load Height Inches (mm)	Swivel Radius Inches (mm)	Wheel Bearing	Model Number
5	1-1/4	TPR Flat	250	6-5/8" (168)	4" (100)	Precision Ball	MP-05TPP-125-TL-____
5	1-1/4	TPR Round	275	6-5/8" (168)	4" (100)	Precision Ball	MP-05RTP-125-TL-____



GRIP RING STEM DIRECTION LOCK MODELS

(LOCKS SWIVEL ONLY)

Wheel Diameter (Inches)	Tread Width (Inches)	Wheel Description	Capacity (Lbs)	Load Height Inches (mm)	Swivel Radius Inches (mm)	Wheel Bearing	Model Number
5	1-1/4	TPR Flat	250	6-5/8" (168)	4" (100)	Precision Ball	MP-05TPP-125-DL-____
5	1-1/4	TPR Round	275	6-5/8" (168)	4" (100)	Precision Ball	MP-05RTP-125-DL-____

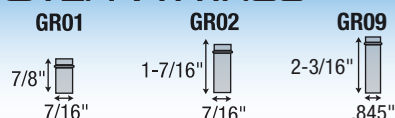


Stems ship with a loose bolt for easier alignment of the directional lock. The direction lock caster will not remain in a fixed position when used with a grip ring stem.

Specify Grip Ring Stem (GR) code, see fittings below for dimensions:

GRIP RING STEM FITTINGS

See fittings page for more options.



MARQUEE (MP)

THREADED STEM MODELS

FREE SWIVEL • TOTAL LOCK • DIRECTION LOCK

IMPROVED



- APPLICATIONS**
- Food Service Equipment
 - Case Carts
 - Utility Carts
 - Medical Equipment
 - Institutional Equipment
 - Hospital Carts
 - Animal Cage Carts
 - Pharmaceutical Equipment

- FEATURES**
- Glass filled nylon body
 - New precision ball bearing raceway
 - **Total lock and direction lock** brake models available
 - Resistant to water and most chemicals
 - Precision bearing in wheel
 - Riveted axle
 - Standard color is light gray with white strip and white wheel core

Our MP Series features attractive two-tone accents.



Custom colors available. Consult factory for quantities.

THREADED STEM MODELS

Precision sealed ball bearing raceway design for smooth, quiet maintenance free ride.

Wheel Diameter (Inches)	Tread Width (Inches)	Wheel Description	Capacity (Lbs)	Load Height Inches (mm)	Swivel Radius Inches (mm)	Wheel Bearing	Model Number
5	1-1/4	TPR Flat	250	6-5/8" (168)	4" (100)	Precision Ball	MP-05TPP-125-SW-_____
5	1-1/4	TPR Round	275	6-5/8" (168)	4" (100)	Precision Ball	MP-05RTP-125-SW-_____



Specify Threaded Stem (TS) code, see fittings below for dimensions:

THREADED STEM FITTINGS

See fittings page for more options.

TS02



TS03



MARQUEE (MP)

TOP PLATE MODELS

FREE SWIVEL • TOTAL LOCK • DIRECTION LOCK

THREADED STEM TOTAL LOCK MODELS

(LOCKS WHEEL AND SWIVEL)

Wheel Diameter (Inches)	Tread Width (Inches)	Wheel Description	Capacity (Lbs)	Load Height Inches (mm)	Swivel Radius Inches (mm)	Wheel Bearing	Model Number
5	1-1/4	TPR Flat	250	6-5/8" (168)	4" (100)	Precision Ball	MP-05TPP-125-TL-_____
5	1-1/4	TPR Round	275	6-5/8" (168)	4" (100)	Precision Ball	MP-05RTP-125-TL-_____



THREADED STEM DIRECTION LOCK MODELS

(LOCKS SWIVEL ONLY)

Wheel Diameter (Inches)	Tread Width (Inches)	Wheel Description	Capacity (Lbs)	Load Height Inches (mm)	Swivel Radius Inches (mm)	Wheel Bearing	Model Number
5	1-1/4	TPR Flat	250	6-5/8" (168)	4" (100)	Precision Ball	MP-05TPP-125-DL-_____
5	1-1/4	TPR Round	275	6-5/8" (168)	4" (100)	Precision Ball	MP-05RTP-125-DL-_____



Stems ship with a loose bolt for easier alignment of the directional lock.

Specify Threaded Stem (TS) code, see fittings below for dimensions:

THREADED STEM FITTINGS

See fittings page for more options.

TS02

TS03

