

RHOMBUS



BARIATRIC 389

APPLICATIONS

- Mobile X-ray equipment
- Ultrasounds
- Large electrical medical equipment
- Bariatric hospital beds, chairs, tables

FEATURES

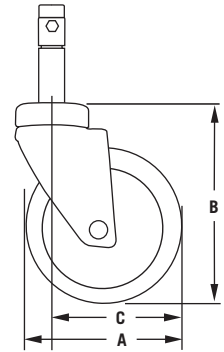
- Double ball raceway
- Integrated selection mechanism with total locking brake "Q" and direction locking brake "R"
- Selection mechanism continually greased
- Compatible with other caster systems
- Powder-coated horn and wheel guard
- Zinc models available, consult factory



389Q
(Swivel with Total Lock)
389R
(Swivel with Total and Position Lock)



385A

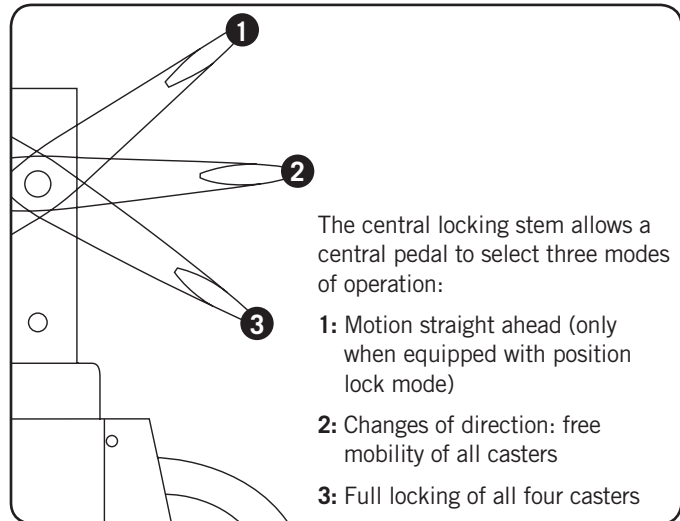


▼ DIMENSIONS

389/385 Series

A: Wheel Diameter	6 1/4" (160mm)	8" (200mm)
B: Overall Height	8" (200mm)	9 1/2" (245mm)
C: Swivel Radius	5" (125mm)	6 1/4" (158mm)

▼ PEDAL SETTINGS



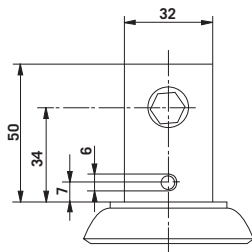


BARIATRIC 389

▼ SPECIFICATIONS

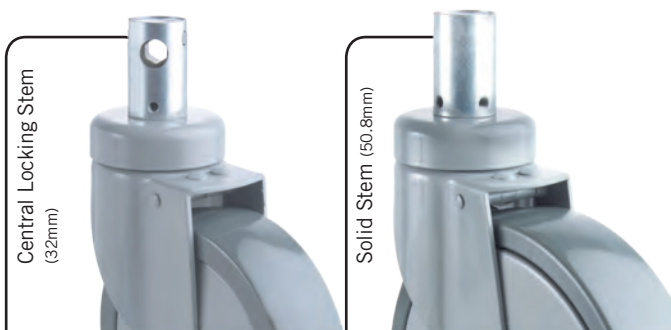
Wheel Diameter	Tread Width	Wheel Material	Wheel Bearing	Load Cap (lb)	Central Locking Caster	EDP
6 1/4" (160mm)	1 3/4" (45mm)	Polyurethane	Precision	550	385A43K160RP016	02003
6 1/4" (160mm)	1 3/4" (45mm)	Polyurethane	Precision	550	389R43K160RP016	02005
6 1/4" (160mm)	1 3/4" (45mm)	Polyurethane	Precision	550	389Q43K160RP016	02007
8" (200mm)	1 3/4" (45mm)	Polyurethane	Precision	600	385A43K200RP016	02004
8" (200mm)	1 3/4" (45mm)	Polyurethane	Precision	600	389R43K200RP016	02006
8" (200mm)	1 3/4" (45mm)	Polyurethane	Precision	600	389Q43K200RP016	02008

The measurements in inches are exact.



- Stem diameter 32mm
- Two locking hole options available
- Locking hole in line or across direction of travel
- Four fixing holes

▼ MOUNTING OPTIONS



▼ WHEEL OPTIONS

