

RHOMBUS



NIMBUS 399

- APPLICATIONS**
- Care beds
 - Hospital beds
 - Intensive care beds
 - Medical appliances
 - OR beds
 - OR tables
 - Stretches
 - Gurneys

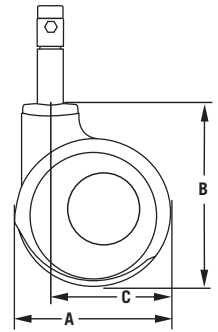
- FEATURES**
- Die-cast aluminum load-bearing housing
 - Highly polished plastic cover in white RAL 9016 or metallic
 - Unique design and patented technology
 - Precision ball bearings in the raceway
 - Autoclave safe
 - Smooth selection function
 - Integrated selection mechanism with total locking brake "Q" and position locking brake "R"
 - Load capacity 330 lb



399Q (Swivel with Total Lock)
399R (Swivel with Total and Position Lock)



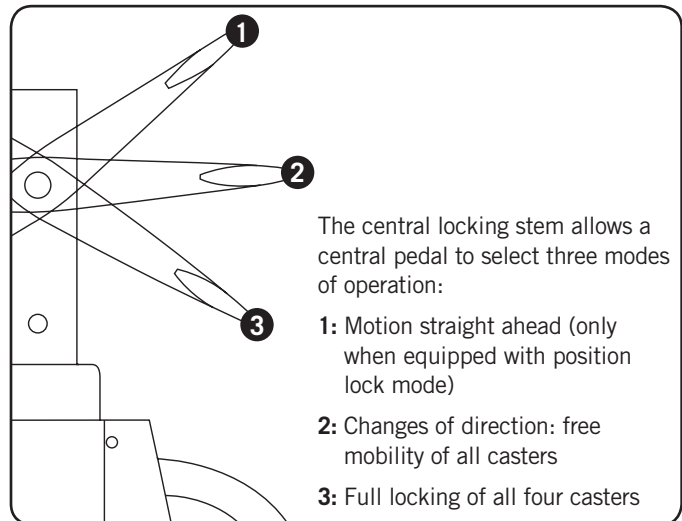
Available in Grey*



▼ DIMENSIONS

| 399 Series | |
|-------------------|----------------|
| A: Wheel Diameter | 6" (150mm) |
| B: Overall Height | 7 1/2" (188mm) |
| C: Swivel Radius | 4 1/2" (117mm) |

▼ PEDAL SETTINGS



▼ AWARDS



reddot design award
winner 2006



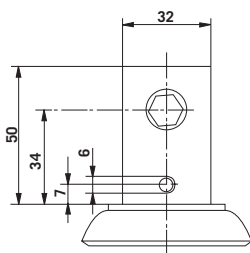


NIMBUS 399

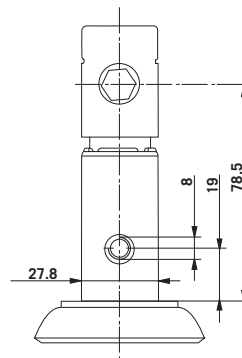
▼ SPECIFICATIONS

| Wheel Diameter | Tread Width | Wheel Material | Wheel Bearing | Load Cap (lb) | Stem (78.5mm) | EDP | Stem (34mm) | EDP |
|----------------|---------------|----------------|---------------|---------------|------------------|-------|-----------------|-------|
| 6" (150mm) | 1 1/4" (32mm) | Polyurethane | Precision | 330 | 399Q38K150VK2351 | 02027 | 399Q38K150VK985 | 02144 |
| 6" (150mm) | 1 1/4" (32mm) | Polyurethane | Precision | 330 | 399R38K150VK2351 | 02028 | 399R38K150VK985 | 02145 |

The measurements in millimeters are exact.



- Stem diameter 32mm
- Two locking hole options available
- Locking hole in line or across direction of travel
- Four fixing holes



- Stem diameter 27.8mm
- Two locking hole options available
- Locking hole in line or across direction of travel
- Four fixing holes
- Snap-on adapter sleeves available for different tube dimensions

▼ MOUNTING OPTIONS

