

PX

Q Premium Quality

T Towing[^]

Thick Tread Polyurethane on Cast Iron Core

Made in the USA



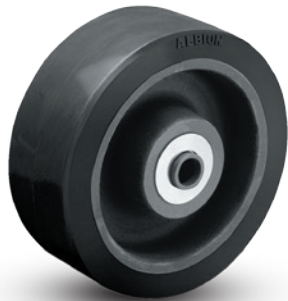
PX wheels are composed of a polyurethane elastomer, open cast on clean, precision tolerance cores. Polyurethane tread is chemically bonded to a cast iron core. High capacity polyurethane protects floors, is non-marking and delivers quieter operation than standard metal wheels.

FEATURES

- **Thickness:** 1" thick polyurethane tread
- **Wheel Face:** Available in flat or 3° crown
- **Hardness:** 95 Shore A
- **Finish:** Green tread on black core
- **Temperature Range:** -40°F to +180°F

WHEEL OPTIONS

- **80 Shore A** durometer option available (20% capacity reduction). Provides more debris resistance. Red-orange on black core
- **70 Shore D** durometer option available (20% capacity increase). Black tread on black core.
- **Note:** Select bearings featured are recommended for standard applications. For special applications or alternate bearings consult factory. See bearing information on page 13
- For customization & special application options, please consult factory
- Tapered bearings are recommended for towing applications



70 Shore D Models
Capacity increases 20% for 70 Shore D durometer models
(To order, add 70D to end of wheel number)



Ergonomic Option 80 Shore A Models
Capacity decreases 20% for 80 Shore A durometer models
(To order, add 80A to end of wheel number)

Wheel Diameter (Inches)	Tread Width (Inches)	Capacity (Lbs) (Rate for manual operation)	Hub Length (Inches)	Bore ID (Inches)	Bearing ID (Inches)	Approx. Wt. (Lbs)	Wheel Number Roller Bearing (01)	Wheel Number Tapered Roller Bearing (09)
6	3	2250	3-1/4	1-15/16	1	13-3/4	PX0650116	
6	3	2250	3-1/4	1-15/16	1-1/4	13-3/4	PX0650120	
6	3	2250	3-1/2	1-15/16	3/4	13-1/4		PX0650912
6	3	2250	3-1/2	1.98	1	13-1/4		PX0650916
8	2-1/2	2200	3-1/4	1-15/16	1	13	PX0840116	
8	2-1/2	2200	3-1/4	1-15/16	1-1/4	13	PX0840120	
8	2-1/2	2200	3-1/2	1-15/16	3/4	12-3/4		PX0840912
8	3	2780	3-1/4	1-15/16	1	16	PX0850116	
8	3	2780	3-1/4	1-15/16	1-1/4	16	PX0850120	
8	3	2780	3-1/2	1-15/16	3/4	15-3/4		PX0850912
8	3	2780	3-1/2	1.98	1	15-3/4		PX0850916
8	4	3850	4-1/4	2-7/16	1-1/4	23-3/4	PX0870120	
8	4	3850	4-1/4	2-7/16	1-1/2	23-3/4	PX0870124	
8	4	3850	4-1/2	2-7/16	1	22-1/2		PX0870916
8	4	3850	4-1/2	2-7/16	1-1/4	22-1/2		PX0870920
10	2-1/2	2600	3-1/4	1-15/16	1	17-1/4	PX1040116	
10	2-1/2	2600	3-1/4	1-15/16	1-1/4	17-1/4	PX1040120	
10	3	3300	3-1/4	1-15/16	1	20-1/2	PX1050116	
10	3	3300	3-1/4	1-15/16	1-1/4	20-1/2	PX1050120	
10	3	3300	3-1/2	1-15/16	3/4	20		PX1050912
10	3	3300	3-1/2	1.98	1	20		PX1050916
10	3	3300	3-1/2	2.33	1-1/4	20		PX1050920
10	4	4620	4-1/4	2-7/16	1-1/4	30-1/4	PX1070120	
10	4	4620	4-1/4	2-7/16	1-1/2	30-1/4	PX1070124	
10	4	4620	4-1/2	2-7/16	1	29		PX1070916
10	4	4620	4-1/2	2-7/16	1-1/4	29		PX1070920
10	5	5500	5-1/4	2-7/16	1-1/4	41-1/4	PX1080120	
10	5	5500	5-1/4	2-7/16	1-1/2	41-1/4	PX1080124	
10	5	5500	5-1/2	2-7/16	1	39-1/4		PX1080916
10	5	5500	5-1/2	2-7/16	1-1/4	39-1/4		PX1080920
12	3	3760	3-1/4	1-15/16	1	28-1/4	PX1250116	
12	3	3760	3-1/4	1-15/16	1-1/4	28-1/4	PX1250120	
12	3	3760	3-1/2	1-15/16	3/4	28		PX1250912
12	3	3760	3-1/2	1.98	1	28		PX1250916
12	3	3760	3-1/2	2.33	1-1/4	28		PX1250920
12	4	5280	4-1/4	2-7/16	1-1/4	36-3/4	PX1270120	
12	4	5280	4-1/4	2-7/16	1-1/2	36-3/4	PX1270124	
12	4	5280	4-1/2	2-7/16	1	35-1/2		PX1270916
12	4	5280	4-1/2	2-7/16	1-1/4	35-1/2		PX1270920
12	5	6600	5-1/4	2-7/16	1-1/4	48	PX1280120	
12	5	6600	5-1/4	2-7/16	1-1/2	48	PX1280124	
12	5	6600	5-1/2	2-7/16	1	47		PX1280916
12	5	6600	5-1/2	2-7/16	1-1/4	47		PX1280920
12	6	8250	6-1/2	2.33	1-1/4	25-3/4		PX1290920
16	3	4680	4-1/4	2-7/16	1-1/4	51	PX1650120	
16	3	4680	4-1/4	2-7/16	1-1/2	51	PX1650124	
16	3	4680	4-1/2	2-7/16	1	49-3/4		PX1650916
16	3	4680	4-1/2	2-7/16	1-1/4	49-3/4		PX1650920
16	4	6570	4-1/4	2-7/16	1-1/4	65	PX1670120	
16	4	6570	4-1/4	2-7/16	1-1/2	65	PX1670124	
16	4	6570	4-1/2	2-7/16	1-1/4	63		PX1670920
16	5	8470	5-1/4	2-7/16	1-1/4	85	PX1680120	
16	5	8470	5-1/4	2-7/16	1-1/2	85	PX1680124	
16	5	8470	5-1/2	2-7/16	1-1/4	85		PX1680920

POLYURETHANE ON CAST IRON • UP TO 8470

[^]Towing: Consult factory prior to ordering to ensure selection supports your towing requirement